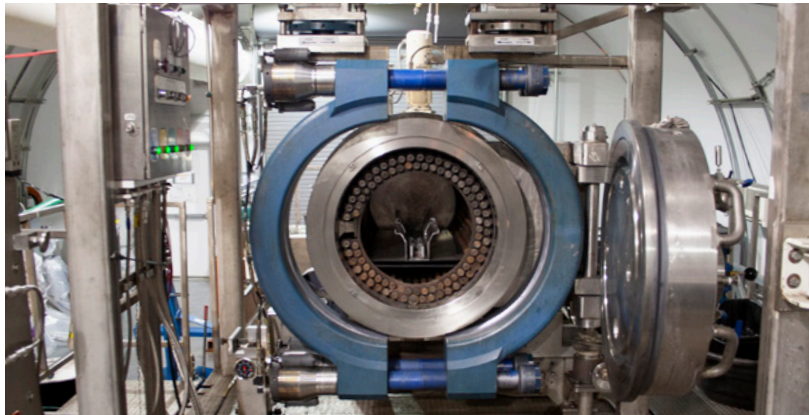


## EXPLOSIVE DESTRUCTION SYSTEM (EDS) OVERVIEW



*The Explosive Destruction System destroys recovered chemical warfare materiel while protecting workers and the environment.*

The Explosive Destruction System provides on-site treatment of chemical warfare materiel in a safe, environmentally compliant manner. As an innovative alternative to the open detonation of explosively configured munitions, the EDS supports both planned and quick-response munition recovery operations.

The EDS uses cutting charges to explosively access chemical munitions, eliminating their explosive capacity before neutralizing the chemical agent. The system's main component, a sealed, stainless-steel vessel, contains all the blast, vapor and fragments from the process. Operators confirm treatment by sampling residual liquid and air from the vessel prior to reopening the EDS.

The success of the first EDS, known as EDS Phase 1, led to the development of a family of EDS units with mission-specific capabilities. The EDS Phase 2 was constructed to contain larger materiel in both size and explosive content. Both systems are trailer-mounted and transport easily where needed.

The EDS site layout, set up in accordance with all applicable laws and permit requirements, ensures the overall safety of the workers and the environment. A pre-operational survey is completed within the two-week period before the scheduled start of operations to evaluate readiness to safely proceed. If any issues are identified, the destruction operation may proceed only after the issues are adequately addressed and all operational requirements are met.

REV: 20250723

PHASE 1	PHASE 2
<b>CAPABILITIES</b>	
<ul style="list-style-type: none"> <li>▶ 4.2-inch mortar</li> <li>▶ 75mm artillery shell</li> <li>▶ Livens projectile</li> <li>▶ Bomblets</li> </ul>	<ul style="list-style-type: none"> <li>▶ 4.2-inch mortar</li> <li>▶ 75mm artillery shell</li> <li>▶ Livens projectile</li> <li>▶ Bomblets</li> <li>▶ 8-inch projectile</li> <li>▶ German Traktor Rocket</li> <li>▶ M47 bomb</li> <li>▶ M70a1 bomb</li> <li>▶ 155mm projectile</li> <li>▶ 4-inch stokes mortar</li> </ul>
<b>AGENT FILL</b>	
<b>UP TO 28 LBS.</b> of agent	<b>UP TO 72 LBS.</b> of agent
<ul style="list-style-type: none"> <li>▶ Mustard</li> <li>▶ Nerve Agents</li> <li>▶ Arsenicals</li> <li>▶ Lewisite</li> </ul>	<ul style="list-style-type: none"> <li>▶ Mustard</li> <li>▶ Nerve Agents</li> <li>▶ Arsenicals</li> <li>▶ Lewisite</li> </ul>
<b>EXPLOSIVE CAPABILITY</b>	
<b>UP TO 1.5 LBS.</b> of explosives	<b>UP TO 9 LBS.</b> of explosives
<b>SYSTEM VOLUME</b>	
<b>54 GAL.</b>	<b>160 GAL.</b>



## EXPLOSIVE DESTRUCTION SYSTEM (EDS) OVERVIEW

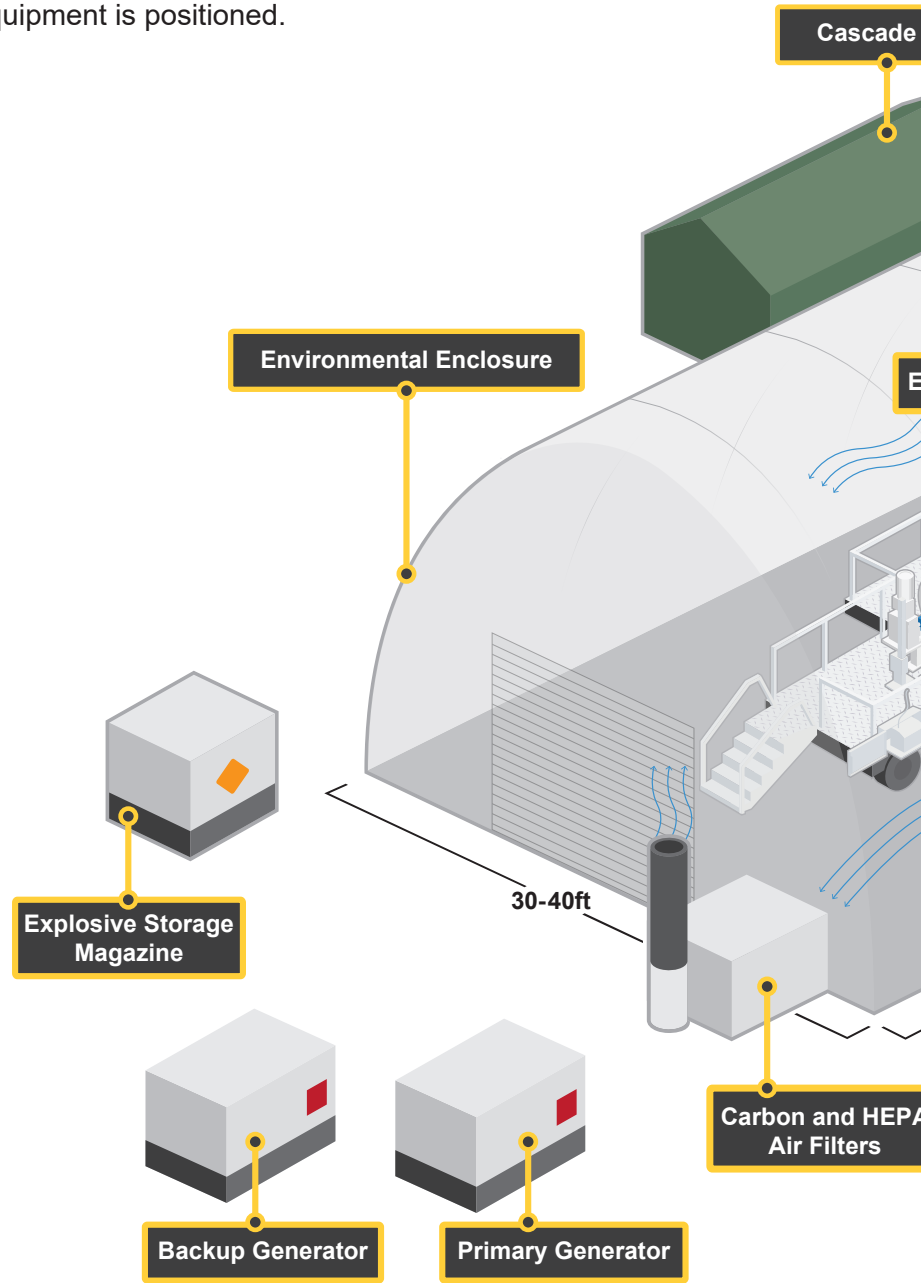
### Generic EDS and Supporting Equipment Setup

The EDS site is not a fixed size or layout. In general, the EDS is placed within a structure which is under a slight vacuum with a pollution abatement system using carbon filtration units. This configuration ensures that any potential vapor contamination from the operation is removed by the pollution abatement system. The following is a typical schematic of how equipment is positioned.

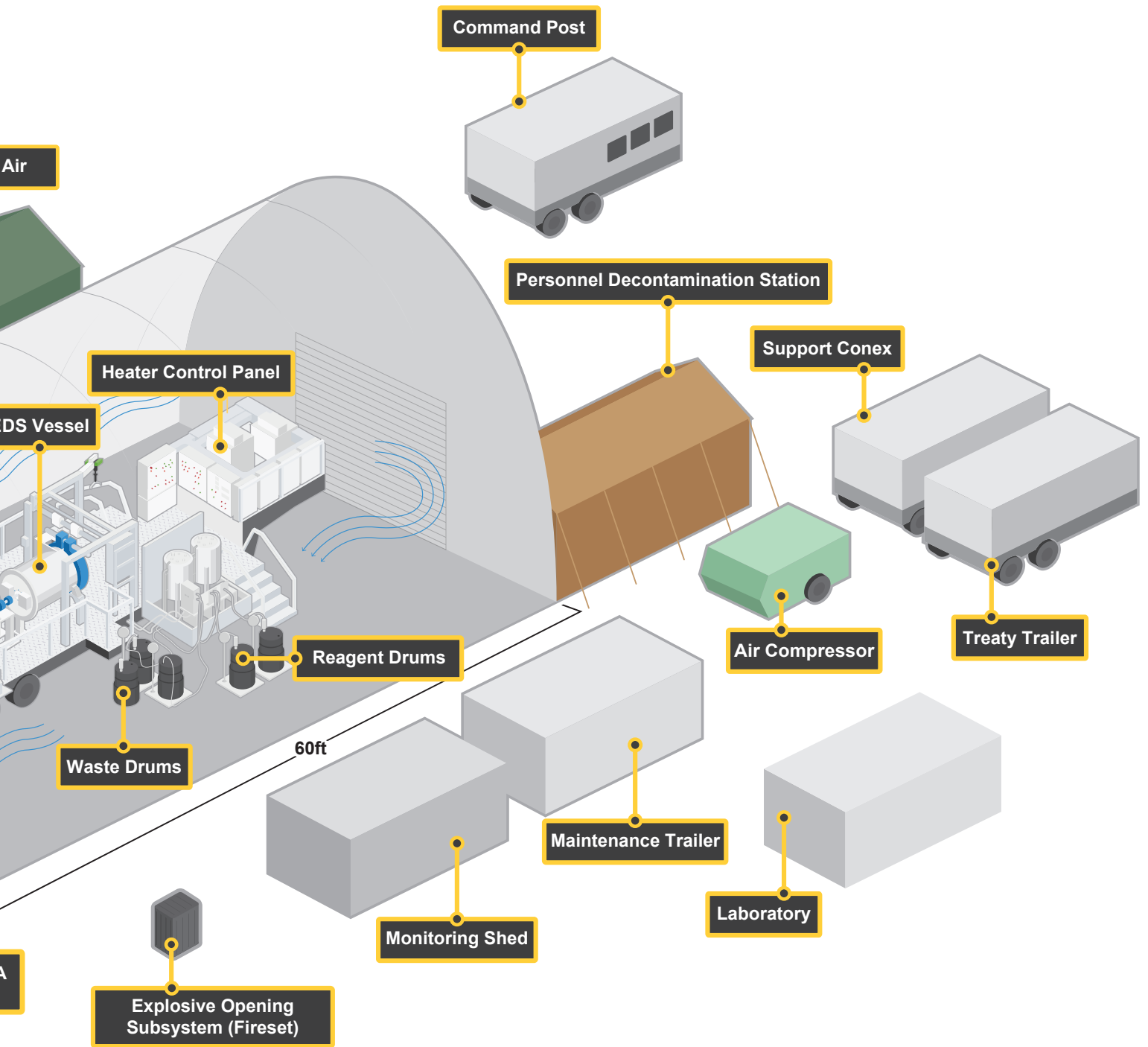
#### Completed Missions

As of September 2021, highlights of successfully completed missions include:

- ▶ Camp Sibert, Alabama
- ▶ Redstone Arsenal, Alabama
- ▶ Pine Bluff Arsenal, Arkansas
- ▶ Livermore, California
- ▶ Pueblo Chemical Depot, Colorado
- ▶ Rocky Mountain Arsenal, Colorado
- ▶ Spring Valley, Washington, D.C.
- ▶ Dover Air Force Base, Delaware
- ▶ Schofield Barracks, Hawaii
- ▶ Aberdeen Proving Ground, Edgewood Area, Maryland
- ▶ Albuquerque, New Mexico
- ▶ Dugway Proving Ground, Utah
- ▶ Tooele Army Depot South, Utah
- ▶ Joint Base McGuire-Dix-Lakehurst, New Jersey
- ▶ Savanna Army Depot, IL



# FACT SHEET



## EXPLOSIVE DESTRUCTION SYSTEM (EDS) OVERVIEW

### How Does the EDS Work?

